

TULIP JACKET

*Mary*

Special Instructions:

Gauge: 2 1/2 sts to inch  
3 1/2 rows to inch

Needles: #9 needle for rib.  
#11 needle for body, or proper needle to obtain gauge

Materials: 5 SKEINS main color  
1 SKEIN lt. grey  
1 Lopi (lt. pink) use 2 strands

Pockets: Kangaroo knitted in pockets with 3 garter stitch edge.

Tube Knit Front for zipper: With MC and J crochet hook, pick up one stitch in each hole on right side and place on #15 - 29 inch round needle. MUST pick up an even # of sts.

Row 1: \* K 1, yf, sl 1 st pw, yb, repeat from\*  
Row 2: repeat row 1.

Repeat rows 1 and 2 until desired width.  
MUST work an even # of rows.

Bind off: Pull # 15 needle out of work. Stitches will divide for front and back. B.O. each side separately.

Repeat above instructions for left front.

Finishing: Sleeve -

Using K crochet hook SC around raglan edge,  
" " " " " " " " " of body.

collar - Use small pattern.

Work crochet trim with K crochet hook as follows:

- Row 1: With lt. grey SC around outside edge.
- Row 2: repeat row 1
- Row 3: ( inc. row ) using MC \* 3 SC, 2 SC in next stitch, repeat from \*
- Row 4: Picot trim - using MC, \* 3 SC, ch 2, sl st in 2nd ch, and repeat from \*

Zippered or Buttoned

# Bomber Jacket

## Materials:

WHITE BUFFALO

## Decreasing:

When decreasing, at the beg. of the row K. the first st., slip the 2nd st., K. the 3rd st., then p.s.s.o. At the end of the row, K. to the last 3 sts., then K. 2 sts. tog. and K. the last st.

Sizes:  
44 - 46  
40 - 42  
36 - 38  
32 - 34

2 1/2 lb. Main Color  
1/2 lb. light  
1/2 lb. dark

## Needles:

	Eng.	Amer.	Metric
1 pr. size	0	12	8.0 mm
1 pr. size	4	9	6.0 mm

## Zipper:

1 open ended - heavy duty zipper or 6 buttons

## Tension:

5 sts - 2 inches - 5 cm  
7 rows - 2 inches - 5 cm  
K. a 4 inch (10 cm) square sample. Check tension. Change needle if necessary to achieve tension as given above.

## Important:

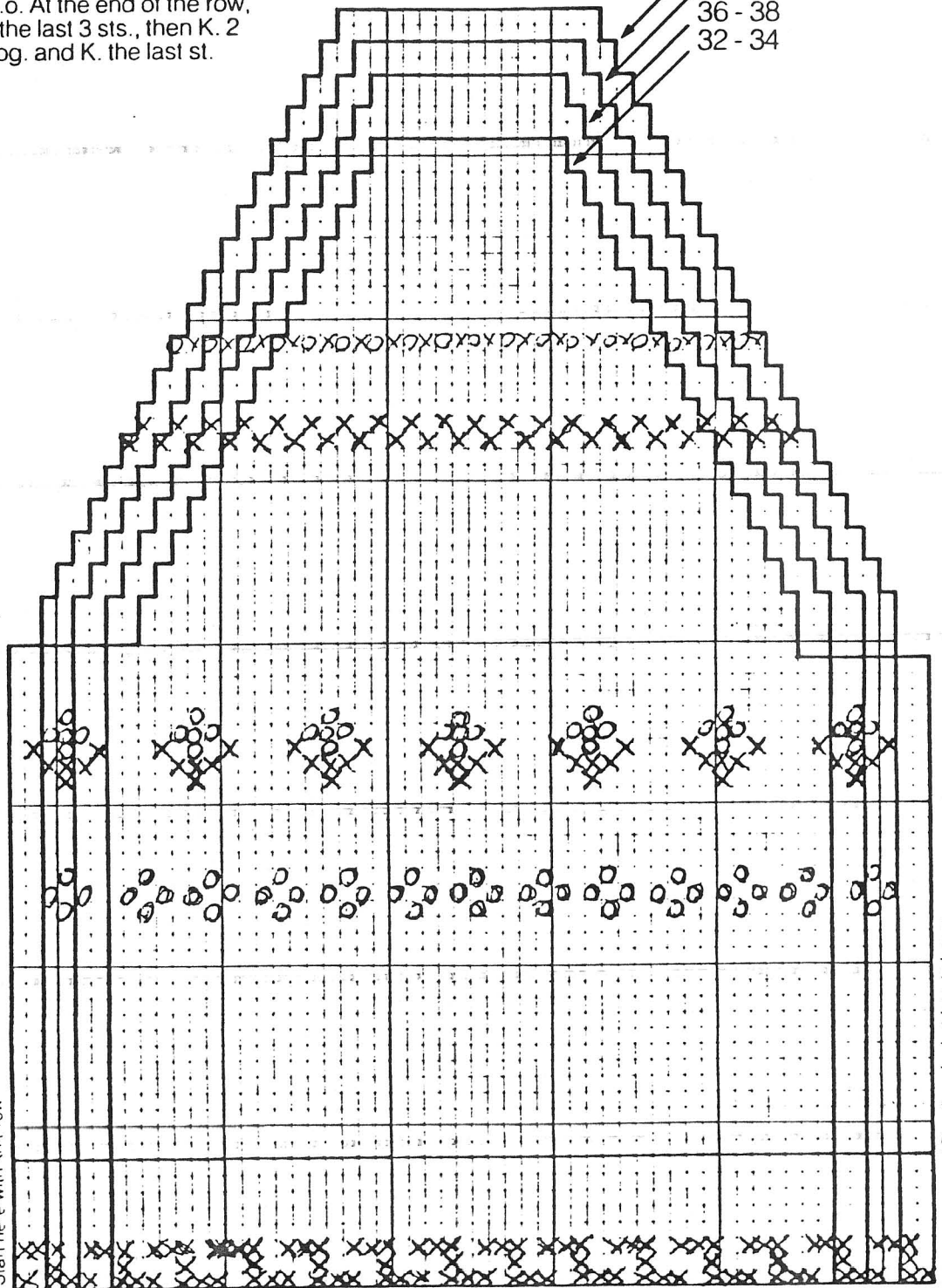
Each square on the graph represents one st. An extra square means an inc. - a square less means a dec. To k. each piece follow the directions given with the graph.

- MAIN COLOR
- LIGHTER - PINK
- ✕ DARKER - GREY

## Directions:

### Back:

With size 6 mm needles cast on  
54 sts. for size 44 - 46  
50 sts. for size 40 - 42  
46 sts. for size 36 - 38  
42 sts. for size 32 - 34  
K. 1. P. 1. rib for 3" or 4", all sizes. Inc. 2 sts. across last row of rib, all sizes. Change to size 8 mm needles and follow graph. For longer or shorter sweater work extra rows or take out rows before pattern. If this is done, remember to do the same at the fronts.

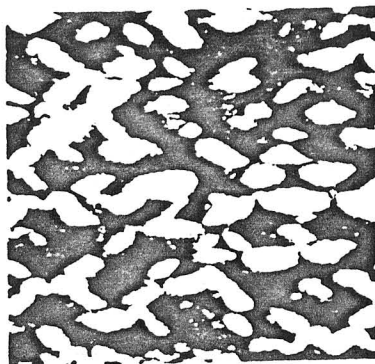


\*Start here with knit row

Bomber Jacket (starts here)

**Fair Isle Knitting:**

A method used when two colors (or more) are worked at one time to make a design. The color not in use is woven in on the back of the design. FOR K. ROWS: Color in use is held in the right hand as usual. Color to be woven in is held taut over middle finger of left hand. K. the st. in the normal way. Still holding color not in use, insert needle in next st. under color being carried. K. st., allowing color being carried to slip off needle and pulling color in use through the st. onto right hand needle. FOR P. ROWS: Hold yarns in same way, working under one st. and over the next with the color being woven. SEE INSET.



**Hints:**

To maintain the sweater's shape, do not place on hook or hanger. Always lay flat. When not in use, store in airy cupboard. The sweater may be dry cleaned, but will lose some of its natural oils. When hand washing use cold water. A tablespoon of olive oil added to final rinse is beneficial. Squeeze out water. Wrap in large towel to extract additional moisture. Do not stretch. Lay out flat to dry.

**Abbreviations:**

- K. — Knit
- P. — Purl
- S. — Slip
- Beg. — Begin
- Inc. — Increase
- Dec. — Decrease
- St.(s) — Stitch(es)
- Tog. — Together
- P.s.s.o. — Pass Slip  
Stitch Over
- cm — Centimeter
- mm — Millimeter

**Right Front:**

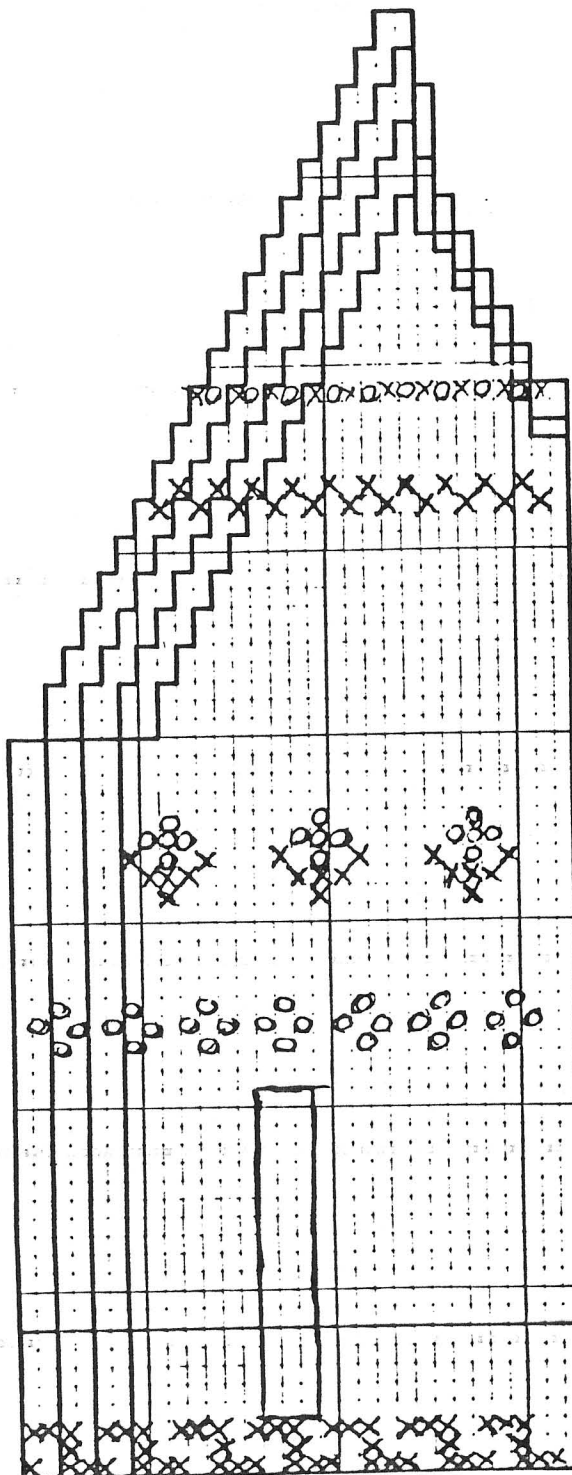
With size 6 mm needles cast on 29 sts. for size 44 - 46  
27 sts. for size 40 - 42  
25 sts. for size 36 - 38  
23 sts. for size 32 - 34  
K.1. P.1 rib for 3" or 4" all sizes. Inc. one st. on last row of rib. Change to size 8 mm needles and follow graph.

**Left Front:**

Work to correspond to right front, following graph.

**Additional Hints:**

To start, unwind the yarn and give it a little twist. It will continue to twist on its own after this. You do not have to start in the middle. When joining ends, always start at the end of the row. You can work the end into the seam. If by chance a single strand breaks during knitting, just overlap the two ends and give it a little twist and continue knitting.

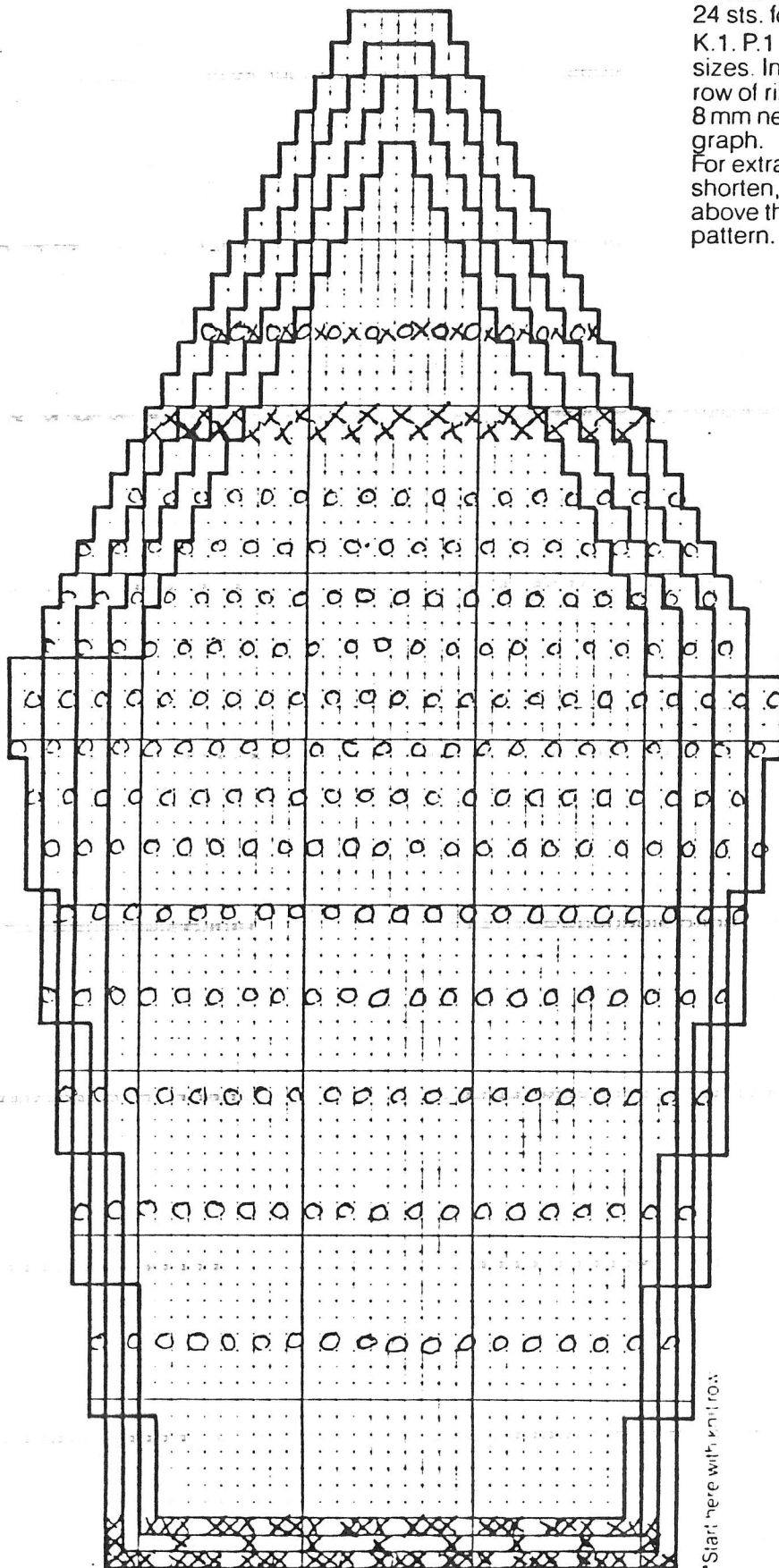


T Bomber Jacket (starts here)

FRONT

Zippered or Buttoned

## Bomber Jacket



### Sleeve(s):

With size 6 mm needles cast on  
30 sts. for size 44 - 46  
28 sts. for size 40 - 42  
26 sts. for size 36 - 38  
24 sts. for size 32 - 34  
K. 1. P. 1 rib for 3" or 4" all  
sizes. Inc. 4 sts. across last  
row of rib. Change to size  
8 mm needles and follow  
graph.  
For extra sleeve length or to  
shorten, work extra rows  
above the rib and before the  
pattern.

### Collar:

Cast on 2 sts. with size 8 mm  
needles.  
First Row: K  
Second Row: Inc. 1 st. in first  
st., k. to end of row.  
Repeat last row to 8 sts. on  
needle.  
Next row: K  
Next row: Inc. in first st., k. to  
end of row.  
Repeat last two rows to 18 sts.  
on needle for large and med.  
sweaters, 17 sts. for small size  
sweater.  
K. even for  
36 rows for small size  
38 rows for med. size  
40 rows for large size  
Make sure you start  
decreasing at the same edge  
as other side of collar.  
K. two tog at beg. of row, k to  
the end.  
Next row: K.  
Repeat last two rows to 8 sts.  
on needle.  
Now, k. two tog at the beg. of  
every row till 2 sts. remain.  
Cast off loosely.

### Front Band:

Measure cardigan from  
bottom to neck edge. With  
size 6 mm needles cast on 5  
sts. and knit a strip in garter  
stitch  $1\frac{1}{2}$ " less than desired  
length. Cast off. Pull  
lengthwise slightly to stretch  
band, then sew on cardigan,  
left side for ladies, right side  
for men.

### Buttonhole Band:

With size 6 mm needles cast  
on 5 sts and garter stitch 6  
rows. Make buttonhole, k 4  
sts. pass 3rd st. over 4th st  
k 1.  
Next row k2, cast on 1 st. k to  
end.  
Approx. 4" in between each  
buttonhole. Make another 5  
buttonholes  
Knit 4 rows. cast off. Sew on  
cardigan.

### Finishing:

Darn in all ends. Press pieces  
lightly on reverse side with  
damp cloth and warm iron.  
Do not press collar or ribbing.  
Avoid stretching. Sew pieces  
tog. Sew in collar. The side  
with the most incs. and decs  
to the neck edge of the  
garment. Pin in zipper. Make  
sure you do not stretch the  
sweater when pinning. Match  
the pattern. Sew in neatly and  
securely.

\*Start here with knit row.